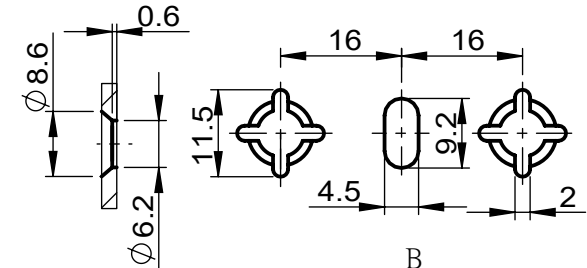
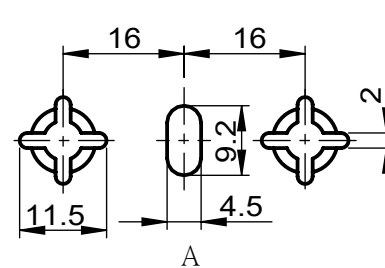
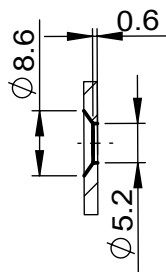
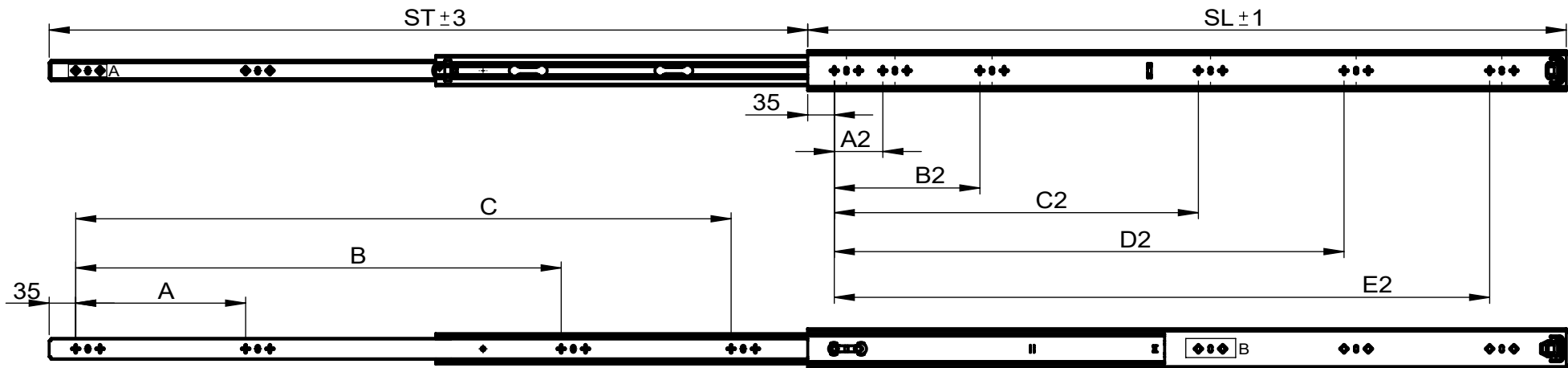
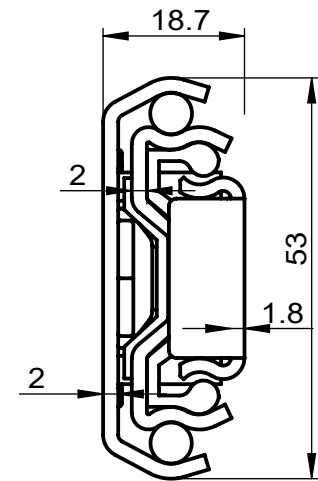


CODE	SL	ST	A	B	C	A2	B2	C2	D2	E2	P/C
C58300	300	300	192	-	-	192	-	-	-	-	10
C58350	350	350	256	-	-	224	-	-	-	-	10
C58400	400	400	96	288	-	64	288	-	-	-	10
C58450	450	450	128	320	-	64	192	320	-	-	10
C58500	500	500	160	384	-	64	224	384	-	-	10
C58550	550	550	160	416	-	64	256	416	-	-	6
C58600	600	600	192	480	-	64	256	416	480	-	6
C58700	700	700	224	416	576	64	192	320	480	576	6
C58800	800	800	224	480	672	64	192	384	544	672	6
C58900	900	900	224	512	768	64	192	448	608	768	6
C581000	1000	1000	224	640	864	64	192	480	672	864	6



NOTES:

1. Length: 300mm to 1000mm(12" to 40")
2. Travel: Full Extension
3. Max. Loading: 90kg(198lb)
4. Mount: Side Mount
5. Finish: Clear Zinc or Black(RoSH)
6. Material: Cold Rolled Steel
7. Packing: Unit Packed in 10pair/carton



Part Number:	Series C58	Drawn by:	Date:	Material:
Description:		Checked by:	Projection Method:	Finish: