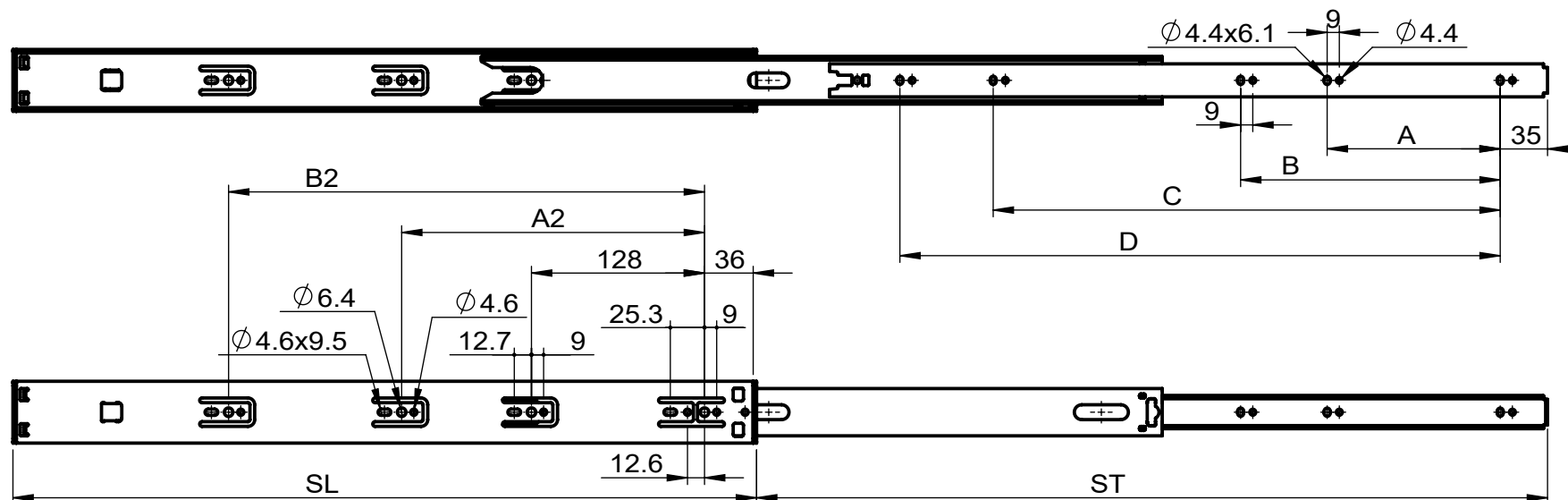
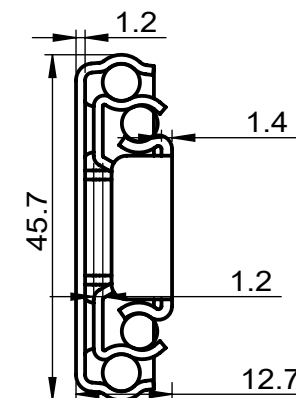


CODE	SL	ST	A	B	C	D	A2	B2	P/C
TSP45250	250	238	-	-	-	156	-	-	10
TSP45300	300	302	-	-	-	200	-	-	10
TSP45350	350	356	96	-	-	256	192	-	10
TSP45400	400	406	128	-	-	294	224	-	10
TSP45450	450	457	96	160	-	344	288	-	10
TSP45500	500	508	96	160	352	394	224	352	10
TSP45550	550	585	128	192	375	444	224	352	10



NOTES:

1. Length: 250mm to 550mm(10" to 22")
2. Travel: Full Extension
3. Max. Loading: 45kg(100lb)
4. Mount: Side Mount
5. Disconnect: Lever Disconnect
6. Finish: Clear Zinc
7. Material: Cold Rolled Steel
8. Packing: Unit Packed in 10pair/carton



Part Number: Series TSP45

Description:

Drawn by:

Date:

Material:

Checked by:

Projection Method:

Finish:

